

# MaxPac<sup>®</sup> 8061S

The smallest footprint dual 21.5" display workstation offered

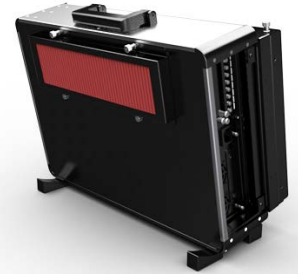


Compact Rugged Portable Computer Workstation is ideal for the most intensive 'in-the-field' CPU and graphics processing requirements including geospatial analysis, industrial / energy applications, HD video streaming, and engineering / design / animation disciplines. The MaxPac<sup>®</sup> S-Class is the ultimate lightweight configuration for geospatial power hungry applications.

## MaxPac<sup>®</sup> 8061S (for single or dual external display)

<b>Processor/Mother-board</b>	Intel Xeon E5-2600v4 ; SuperMicro X10SRA .
<b>Memory</b>	Eight DIMM slots DDR-2166MHz, max of 64GB unbuffered ECC or 256GB max using registered ECC (RDIMM).
<b>LCD Display Size</b>	Single or dual 21.5" (1920 x 1080) screens.
<b>LCD Monitor Specifications</b>	300nits min luminance, 170°/160° viewing angle, 5ms switching speed, contrast ratio 1000:1, 16.7M colors with 72% color saturation with Display Port Interface. Maximum resolution supported: 1920 x 1080.
<b>Video Controller Options</b>	nVidia M2000 or M4000 single slot (other graphics offering upon request, subject to certification).
<b>Std I/O Interface</b>	Dual GbE; HD audio; six USB 3.0 external; plus two USB 3.0 internal
<b>PCI-E Expansion Slots</b>	Two PCI-E x16 Gen3; one PCI-E x4 Gen3 (in x8 slot)
<b>Hard Drive (data)</b>	Choice of two 3.5" removable drives with up to 8TB each of removable storage or an 8 drive 2.5" SSD array, up to 2TB per drive. Raid controller optional.
<b>Hard Drive (system)</b>	Choice of SSD 2.5" drive up to 2TB
<b>Optical Drive</b>	SATA slim-line, slot-loading DVD/CD or Blu-ray reader/writer.
<b>Video Projection</b>	Unused external video port available only on video card
<b>Software OS</b>	Windows 7 Pro, Windows 10 Pro, Redhat Enterprise Linux standard, Redhat Enterprise Linux Server, CENT OS
<b>Power Supply</b>	550Watt; 90 to 264VAC; 50/60Hz 115V AC at 400Hz
<b>Size Closed</b>	22" W x 16" H x 9.2" D.
<b>Size Setup (displays unfolded)</b>	41" W x 16" H x 9" D (dual screen only).
<b>Environmental</b>	0 to 50°C; dust tolerance.
<b>Regulation</b>	FCC Class A; CE
<b>Transit Case</b>	Custom Explorer 5833 water-tight roller case that stores keyboard, mouse, and cords (meets Mil Std 810G vibration).
<b>Weight</b>	40 lbs to 50 lbs. depending on options
<b>Weight with transit case: Computer w/ Accessories</b>	60 lbs to 70 lbs depending on options

Rugged FULL-IMPACT shock/vibration isolation chassis with custom K&N Filter System.



Features rich I/O and multiple expansion card slots, which allows for maximum connectivity and utility.



Removable 3.5" or 2.5" system HD or SSD Data Drives choice: 1) Two 3.5" removable drives. Up to 8TB of removable storage. 2) Eight 2.5" removable magazine (8 x 2TB SSD up to 16TB). Separate removable system drive.



Customized Rugged Transit Case provides added protection and easy storage/transportation of the unit and it's accessories.