

## 21.5" Single, Dual, Triple Screen or Dual Screen Over/Under Dual or Single Xeon, Rugged Portable PC Workstation

MaxPac8210SL3



MaxPac8210SL2V



MaxPac8210SL1



MaxPac8210SL2



### Popular workstation for C4ISR imagery and video, exploitation, and analysis

#### Key Features:

- Choice of Single Xeon E5-1600v3 or Dual Xeon E5-2600v3 processors up to 18 cores per processor
- 512GB main memory maximum
- Choice of most powerful graphics (nVidia M4000, M5000 and M6000 supporting a choice of one to three 21.5" (1920 x 1080) Full HD displays, with optional 10 touch and remote projector repeater ports on specific models.
- Up to six high performance PCI-E card slots (10" length cards) provides plenty of expansion for 10GbE, Firewire, eSATA, video capture etc.
- Removable 4 x 3.5" or 8 x 2.5" data disk magazine with up to 32TB SATA/SAS of RAID storage and separate removable system disk magazine supporting dual mirrored SSD drives or rotating HDD. Optional FIPS drives available.
- Optional integrated power backup UPS with support for operating from 28VDC
- Aggressive dust filtration using K&N Technology and guaranteed operation over 0°C to 50°C
- MIL STD 810G Transit case
- Single removable rear panel with captive fasteners for quick service access



**MaxVision**<sup>®</sup>  
RUGGED PORTABLE COMPUTERS LLC

**MaxPac**<sup>®</sup>  
**8210SL/8010SL**

MaxPac Class	MaxPac8210SL				MaxPac8010SL				
	Model	8210SL1+	8210SL2	8210SL3	8210SL2V	8010SL1	8010SL2	8010SL3	8010SL2V
Displays	Single 21.5"	Dual 21.5"	Triple 21.5"	Dual 21.5" O/U	Single 21.5"	Dual 21.5"	Triple 21.5"	Dual 21.5" O/U	
Display Resolution	1920 x 1080								
Display Brightness	250mcd/m <sup>2</sup>								
Touch Option	10 Touch			10 touch	10 Touch				10 touch
HDMI Proj. Port Option	yes	yes	yes		yes	yes	yes		
Graphics Card	nVidia Quadro K1200, K2200, M4000, M5000, M6000								
Motherboard	SuperMicro X10DAL-i				SuperMicro X10SRA				
Processors	Dual E5-2600v3 Family @ 120 w or less per processor				Single E5-1600v3 or single E5-2600v3 up to 135watts				
Memory	Total Slots : 8 (4-channel per CPU, 4 DIMM per CPU) Capacity : Maximum up to 256GB LRDIMM. Memory Type :DDR4 2133 /1866*/1600/1333 RDIMM*, DDR4 2133 /1866*/1600/1333 LRDIMM*DDR4 2133 /1866*/1600/1333 NVDIMM*.Memory Size :32GB, 16GB, 8GB, 4GB RDIMM 64GB, 32GB LRDIMM								
TPM option	yes				yes				
Ethernet	Dual GbE, Intel® i210 10BASE-T, 100BASE-TX, 1000BASE-T, RJ45 connector std + Dual Port 10GbE Optional PCIe card + Dual Port 40GbE SPF optional PCIe card								
USB	4 USB 3.0 (2 more internal header) 2 USB 2.0 internal header + 1 Type A				6 USB 3.0 (2 more internal header);				
System Disk Configuration	2.5" removable magazine supporting either single or dual SSD, Capacity per drive up to 1.6TB								
System Disk types	Single or dual SSD (RAID 0 or 1) 128GB to 1.6TB. FIPS 140-2 optional using Seagate 800GB SSD or 900GB SAS HDD								
Data Disk Configuration	Four 3.5" removable drive magazine supporting SATA/SAS drives , 4x8TB=32TB maximum								
Data disk types	Up to four 2TB,4TB, 6TB or 8TB 7200rpm Enterprise Class Drives SATA or SAS standard. SAS, SSD with or without FIPS 140-2 is available upon request. Alternatively up to 8 x 2.5" SSD up to 1.6TB per drive. 800GB FIPS 140-2 SSD available								
Standard Software RAID	RAID 0, 1, or 10 standard, (H/W RAID required for RAID 5)								
H/W Data RAID Card	LSI00202 MegaRAID SAS 9271-8i, or 9271-4i with Safestore and battery backup (supports FIPS 140-2)								
Optical (slim slot)	Std DVD Burner; Optional Bluray/DVD Burner								
Option Slots	2 PCIe 3.0 x16, PCIe 3.0 x8(in16), PCIe 3.0 x4(in8), PCIe 2.0 x4(in8)				1 PCIe 3.0 x16, 3 PCI-E 3.0 x8(in x16), 2 PCI-E 2.0 x 1 (in x 4)				
Optional I/O	2 USB2.0, 2 USB3.0, fast serial can be brought out through custom I/O brackets off motherboard. add-in PCIe cards to support 3x Firewire 800 (powered); add-in PCIe to support 2 x eSATA; Please check to see if there are adequate slots available for add-in options.								
Audio	7.1 HD Audeo with optical S/SPDIF stereo speakers				Realtek ALC1150 with 7.1 connectors integrated stereo speakers				
UPS Option	Complete internal Uninterruptable Power Source 80+ Watt Hour Battery for backup of 5-10 minutes. Also supports 28VDC input power, add 6 lbs								
Keyboard/Mouse	104 key keyboard (USB); Logitech M110 mouse (USB). Optional 104 keyboard with CAC/Smart Card Reader								
Power Supply	860 watt full global power 90-264VAC with quick disconnect for service, Display power has a separate power supply								
Tripod/Keyboard option	optional								
Software: OS	Windows 7 Pro, Windows 8.1 Pro, Windows 2012 Server, Redhat Enterprise Linux standard, Redhat Enterprise Linux Server, CENT OS								
Dimension Setup	20.8"W x 16.1"H x 8.5"D	40.4"W x 16.1"H x 8.5"D	59.3"W x 16.1"H x 9.7"D	21.2"W x 26.6"H x 8.5"D	20.8"W x 16.1"H x 8.5"D	40.4"W x 16.1"H x 8.5"D	59.3"W x 16.1"H x 9.7"D	21.2"W x 26.6"H x 8.5"D	
Weight	44 lbs	49.7 lbs	56 lbs	51.5 lbs	44 lbs	49.7 lbs	56 lbs	51.5 lbs	
Transit Case/Size	Pelican 1630 with custom foam inserts and Poron vibration isolation system. Outside Dim. 31.28" x 24.21" x 17.48"								
Loaded Weight	90 lbs	98 lbs	101 lbs	98 lbs	84 lbs	92 Lbs	101 lbs	97 lbs	
Transit Case Environmental	Mil Std 810G, 506.5 P I(Rain), 509.5(Salt/Fog), 510.5(Sand/Dust),514.6C-II(Vibration), 516.6-VI(drop), -33C to 70C non operational								
Operational Environmental	Mil std 810G, 501.5 A2 (Basic HOT) 0-50C Operational + K&N Dust Filter								
Regulatory	FCC Class A								

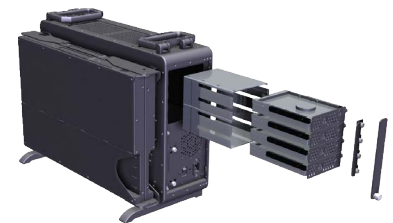
Pelican 1630 transit case meets MIL STD 810G environmental requirements



Optional Integrated Tripod Stand and Keyboard Tray for Free Standing Operation



Exploded view of 4x 3.5" removable magazine. Supports SATA and SAS drives. Shown with displays closed.



While Rugged Portable Computers LLC uses reasonable effort to ensure that this information is accurate and up-to-date, the information may contain factual or typographical errors. Rugged Portable Computers LLC makes no warranties or representation as to the accuracy of such information. The information and products may be changed at any time without prior notification or obligation. Rugged Portable Computers LLC © Copyright 2015.

Rugged Portable Computers LLC | 495 Production Ave. | Madison, AL 35758, USA  
Phone: 256.772.3058 | Toll Free: 800.533.5805 | Fax: 256.772.3078  
E-Mail: sales@maxvision.com | Web: www.maxvision.com