

## 27" (3840 x 2160) Single, Dual or Triple 24.1" (1920 x 1200) Single, Dual, Triple or Six Screen, Dual Xeon, Rugged Portable PC Workstation



MaxPac8261XL6



MaxPac8261XL1



MaxPac8261XL2V



MaxPac8261XL2

### The ultimate workstation for C4ISR imagery, mapping, video, exploitation and analysis

#### Key features:

- Dual Xeon E5-2600v4 processors up to 44 cores/88 threads using Supermicro X10DAC motherboard.
- Up to 1TB of DDR-4 ECC main memory.
- Modular displays: optional 27" UHD 3840 x 2160 in single dual or triple fold-out or one to six 24.1" (1920 x 1200) Full HD+ displays, with optional 10 touch and remote projector repeater ports on some models.
- Six high performance PCI-E full length card slots (three PCIe 3.0 x16, two PCIe 3.0 x8 slots, one PCIe 2.0x4in8)
- Removable data disk magazine with up to 40TB of RAID storage and separate removable system disk magazine supporting dual, mirrored SSD drives
- Full Global Power support from 90VAC to 264VAC
- Optional integrated power backup UPS and support for external 28VDC power
- Full dust filtration and guaranteed operation over 0C to 50C
- MIL STD 810G Transit case
- Single removable rear panel with captive fasteners for quick service access

MaxPac Class	MaxPac8262XL			MaxPac 8261XL				
	8262XL1	8262XL2	8262XL3	8261XL1	8261XL2	8261XL3	8261XL6	8261XL2V
Model								
Displays/Conf.	Single 27"	Dual 27"	Triple 27"	Single 24.1"	Dual 24.1"	Triple 24.1"	Six 24.1"	Dual 24.1" O/U
Display Resolution	3840 x 2160			1920 x 1200				
Display Brightness	350mcd/m <sup>2</sup>			300mcd/m <sup>2</sup>				
Touch Option				10 touch				10 touch
HDMI Proj. Port Option				yes	yes	yes	yes	
Graphics Card	nVidia Quadro K1200, M2000, M4000, M5000, M6000							
Motherboard	SuperMicro X10DAC							
Processors	Dual E5-2600v4 Family							
Memory	Total Slots : 16 (4-channel per CPU, 8 DIMM per CPU) Capacity : Maximum up to 1TB LRDIMM. Memory Type :DDR4 2133MHz; Memory Size :32GB, 16GB, 8GB,4GB RDIMM; 64GB, 32GB, LRDIMM							
TPM option	yes							
Ethernet	Dual Port Gigabit Ethernet, Intel i350, 10BASE-T, 100BASE-TX, 1000BASE-1, RJ45 connector std + Dual Port 10GbE Optional PCIe card + Dual Port 40GbE SFP optional PCIe card							
USB	4 USB 3.0 (2 more internal header) 2 USB 2.0 (2 more internal header)							
System Disk Configuration	2.5" removable magazine supporting either single 15mm thick enterprise SATA or SAS drive or dual 9.5mm thick SATA SSD drives. Capacity per drive up to 2.0TB							
System Disk types	Single or dual SSD (RAID 0 or 1) up to 2TB. FIPS 140-2 optional using Seagate 800GB SSD							
Data Disk Configuration	Choice of dual removable 3.5" SATA/SAS Enterprise Drives, or a removable 8 x 2.5" SSD Magazine							
Data disk types	Up to four 4TB, 6TB or 8TB or 10TB 7200rpm Enterprise Class Drives SATA or SAS standard. SAS, SSD with or without FIPS 140-2 is available upon request. Alternatively up to 8 x 2.5" SSD up to 2.0TB per drive. 800GB FIPS 140-2 SSD available							
Standard Software RAID	RAID 0, 1, or 10 standard, (H/W RAID required for RAID 5)							
H/W Data RAID Card	LSI00202 MegaRAID SAS 9271-8i, or 9271-4i with Safestore and battery backup (supports FIPS 140-2)							
Optical (slim slot)	Std DVD Burner; Optional Bluray/DVD Burner:							
Option Slots	3x PCI-E 3.0 x16, 2x PCI-E 3.0 x8, 1x PCI-E 3.0 x4 (in x8) Both processors must be loaded to access all slots; Full Length Card support							
Optional I/O	Additional I/O on headers can be brought out through custom I/O plates, 2 USB2.0, 2 USB3.0. add-in PCIe cards to support 3x Firewire 800 (powered); add-in PCIe to support 2 x eSATA; Please check to see if there are adequate slots available for							
Audio	RealTek ALC889 7.1 High Definition Audio with S/PDIF header, integrated stereo speakers							
UPS Option	Complete internal Uninterruptable Power Source 80+ Watt Hour Battery for backup of 5-10 minutes. Also supports 28VDC input power, add 6 lbs							
Keyboard/Mouse	104 key keyboard (USB); Logitech M110 mouse (USB). Optional 104 keyboard with CAC/Smart Card Reader							
Power Supply	860watt full global power 90-264VAC with quick disconnect for service							
Tripod/Keyboard option	optional							
Software: OS	Windows 7 Pro, Windows 10 Pro, Windows 2012 Server, Redhat Enterprise Linux standard, Redhat Enterprise Linux Server CENT OS							
Dimension Setup	25.0"W x 16.1"H x 8.5"D	50.0"W x 16.1"H x 8.5"D	75.0"W x 16.1"H x 9.7"D	22.3"W x 16.1"H x 8.5"D	44"W x 16.8"H x 8.5"D	65.4"W x 16.8"H x 9.7"D	43.4"W x 16.8"H x 9.7"D	22.5"W x 30.9"H x 9.7"D
Weight	49 lbs	59 lbs	69 lbs	47.5 lbs	56 lbs	64 lbs	95 lbs	58 lbs
Transit Case/Size	Pelican iM-3075 with custom foam inserts and Poron vibration isolation system. Outside Dim. 33.30" x 24.40" x 19.30". Six display model uses an additional iM290 case for the upper detachable display array.							
Loaded Weight	98 lbs	109 lbs	120 lbs	98lbs	108lbs	118lbs	118 + 60lbs	108lbs
Transit Case	Mil Std 810G, 506.5 P I(Rain), 509.5(Salt/Fog), 510.5(Sand/Dust),514.6C-II(Vibration),516.6-VI(drop), -33C to 70C non operational							
Environmental	Mil std 810G, 501.5 A2 (Basic HOT) 0-50C Operational							
Operational								
Regulatory	FCC Class A, CE							

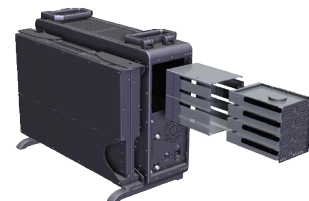
Roller Transit Case



Optional Tripod Stand and Keyboard Tray for Free Standing Operation



Removable Drives Exploded and dual display closed



While Rugged Portable Computers LLC uses reasonable effort to ensure that this information is accurate and up-to-date, the information may contain factual or typographical errors. Rugged Portable Computers LLC makes no warranties or representation as to the accuracy of such information. The information and products may be changed at any time without prior notification or obligation. Rugged Portable Computers LLC © Copyright 2016.