

# MaxPac<sup>®</sup> 8070A

Entry-level rugged workstation



**An entry level rugged workstation for users requiring performance and capabilities that stretch beyond the limitations of rugged notebooks or laptop computers**

The MaxPac<sup>®</sup> A-Class workstations have “desert proven” air filtration systems and sufficient airflow for operation in 0 to 50°C environments. Additionally, users can choose between high resolution 1280 x 1024 17” LCD displays with or without resistive touch screen capability. When packed in the optional Pelican<sup>®</sup> 1610 transit case, the MaxPac A-Class meets MIL-STD 810G requirements for -40°C to 70°C, rain, dust, sand, salt fog, vibration (e.g., from two-wheel trailers), and drops up to 30”. Supports two PCI-E option slots for graphics or data collection, and up to four removable 2.5” HDDs or SSDs.

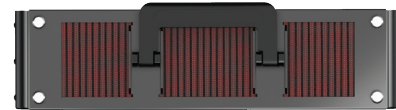
## MaxPac<sup>®</sup> 8070A

<b>Processor</b>	Intel Core Single socket H4 (LGA 1151) supports Intel <sup>®</sup> 7th/6th Gen. Core™ i7/i5/i3 series
<b>Motherboard</b>	Supermicro C7Q270-CB-ML (7th generation Intel Core), features Kabe Lake technology using LGA 1151 processors with up to 64GB memory and optional TPM. Non-removable M.2 SSD optional.
<b>Memory</b>	Up to 64GB DDR3 2133MHz non-ECC.
<b>LCD Display Size</b>	17" 1280 x 1024 display.
<b>LCD Monitor Specifications</b>	Viewing angle: 160°H/160°V; Contrast Ratio: 1000:1; Response Time: 8ms; 300nits; 16.7 million colors.
<b>Video Interface (std)</b>	HDMI, DP and DVI-D for external connect.
<b>Video Controller Options</b>	Integrated Intel HD graphics (optional nVidia Quadro P2000 or P4000)
<b>Std I/O Interface</b>	Integrated dual GbE; four USB 3.0 (+ 2 internal); two USB 2.0 (+ 2 internal); HDMI (used for integrated monitor), display port; DVI-D; and audio jacks with internal speaker.
<b>PCI-E Expansion Slots</b>	One PCI-E 3.0 x16 and one PCI-E 3.0 x 4 plus M.2 internal SSD
<b>PCI-E Slot Lengths</b>	9 to 13" depending on disk configuration.
<b>Removable Hard Drive</b>	Up to four 2.5" drives in two dual drive removable magazines. SSD up to 7.68TB per drive available.
<b>Optical Drive Options</b>	DVD/CD or Blu-ray reader/writer.
<b>Video Projection Ports</b>	DVI-D or display port
<b>Power Supply</b>	300Watts; 90 to 264VAC; 50/60Hz.
<b>Software OS</b>	Windows 10 Pro, Microsoft Server 2016 or Linux (available upon request, call for your particular needs).
<b>Size Closed</b>	16"W x 16.3"H x 5.4"D.
<b>Size Open (tilted)</b>	16"W x 16.3"H x 8"D.
<b>Environmental</b>	0 to 50°C operating temperature and 10 to 90% relative humidity.
<b>Transit Case (optional)</b>	Pelican 1610 with custom polyethylene foam. (23 lbs.)
<b>Weight</b>	26 lbs. without transit case.

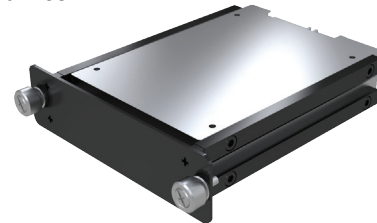
Patented "box-in-box" design protects internal system from shock and vibration.



"Desert proven" air filtration system eliminates nearly all dust particles.



Tool-less removable 2.5" SATA disk drives.



Feature-rich I/O and expansion card slot for maximum connectivity and utility.



Pelican 1610  
Transit Case

While Rugged Portable Computers LLC uses reasonable effort to ensure that this information is accurate and up-to-date, the information may contain factual or typographical errors. Rugged Portable Computers LLC makes no warranties or representation as to the accuracy of such information. The information and products may be changed at any time without prior notification or obligation. Rugged Portable Computers LLC © Copyright 2017.