

# MaxPac<sup>®</sup> 8071S

The smallest footprint, highest performance dual 21.5" display workstation offered



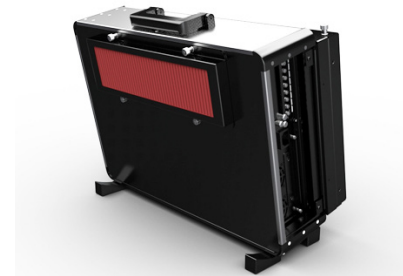
The MaxPac8071S is based on the Intel Xeon-W Scalable processor series. Core counts from 4 to 18 are supported with maximum clock rates up to 4.5GHz on certain processors. This is an excellent choice for high-performance graphics workstation used by geospatial applications where space and weight considerations are of high importance. The Supermicro X11-SRA motherboard supports up to 512GB of DDR4 memory, dual GbE/5GbE, and audio on the motherboard. The MaxPac8071S supports up to three PCIe3.0 x16 slots. This allows for high performance graphics cards like the nVidia Quadro P5000/RTX5000 (requires two slots) and P4000/RTX4000/P2200 (requires one slot). The system drive is a single removable SSD. Data can be stored on either dual 3.5" HDDs or an 8-drive removable SSD magazine which can be enhanced by an optional Broadcom MegaRAID controller supporting RAID 5/6.

The single or dual 21.5" 1920 x 1080 display mounts on the front of the tilt adjustable briefcase chassis. The inner chassis where all computer components are housed, is shock mounted in a 1/2-inch Poron suspension to protect from rough handling out of the transit case. The workstation is exceptionally light, for its performance, and designed to function from 0-50C; operating off of 90-264VAC 50/60Hz. A K&N Technology filter mounted on the rear protects against fine particle dust. It is shipped in a MIL STD 810G roller Pelican style case.

## MaxPac<sup>®</sup> 8071S

<b>Processor/Mother-board</b>	Intel Xeon W Series 4-18 Cores, up to 4.5GHz ; SuperMicro X11SRA
<b>Memory</b>	Eight DIMM slots DDR4-2666MHz,max of 512GB registered ECC(using LRDIMM)
<b>LCD Display Size</b>	Single or dual 21.5" (1920 x 1080) screens.
<b>LCD Monitor Specifications</b>	300nits min luminance, 170°/160° viewing angle, 5ms switching speed, contrast ratio 1000:1, 16.7M colors. Maximum resolution supported: 1920 x 1080.
<b>Video Controller Options</b>	nVidia Quadro P2000, P4000 single slot (P5000 offering upon request).
<b>Std I/O Interface</b>	GbE + 5GbE network ports RJ45; HD audio; two USV 2.0 + four USB 3.0 external; plus two USB 3.0 and four USB 2.0 internal. Two internal USB 3.1 Type A ports on the motherboard
<b>PCI-E Expansion Slots</b>	Three PCI-E3.0 x16
<b>HDD/SDD (data drives)</b>	Choice of two 3.5" removable drives with up to 16TB each of removable storage or an 8 drive 2.5" SSD array, up to 7.68TB per drive. RAID controller optional.
<b>SDD (system drive)</b>	Choice of SSD drive up to 7.68TB
<b>Optical Drive</b>	SATA slim-line, slot-loading Blu-ray reader/writer.
<b>Video Projection</b>	Two free external video ports are available to support remote projectors and monitors
<b>Software OS</b>	Windows 10 Pro, Redhat Enterprise Linux Standard, Redhat Enterprise Linux Server, CENT OS, inquire for Linux details.
<b>Power Supply</b>	550Watt; 90 to 264VAC; 50/60Hz 115V AC at 400Hz
<b>Size Closed</b>	22" W x 16" H x 9.2" D.
<b>Size Setup (displays unfolded)</b>	41" W x 16" H x 9" D (dual screen only).
<b>Environmental</b>	0 to 50°C operating; dust tolerance, washable K&N Filters. -40C to 70C non-operating
<b>Regulation</b>	FCC Class A; CE
<b>Transit Case</b>	Custom Explorer 5833 water-tight roller case that stores keyboard, mouse, and cords (meets Mil Std 810G vibration and drop).
<b>Weight</b>	40 lbs to 50 lbs. depending on options
<b>Weight with transit case: Computer w/ Accessories</b>	60 lbs to 70 lbs depending on options

Rugged shock/vibration isolation chassis with custom K&N Filter System.



Features rich I/O and multiple expansion card slots, which allows for maximum connectivity and utility.



Removable dual 3.5" HDD or eight 2.5" SSD Data Drives supporting up to 32TB and 61.44TB respectively. Separate removable system SSD is also included.



Customized Rugged Transit Case provides added protection and easy storage/transportation of the unit and its accessories.