

**21.5" Single, Dual, or Triple Screen  
Dual or Single Scalable Xeon, Rugged Portable PC Workstation**

MaxPac SL3



MaxPac SL2V



MaxPac SL1



MaxPac SL2



**Popular workstation for C4ISR imagery and video, exploitation, and analysis**

**Key Features:**

- Choice of Single Xeon W or Dual Scalable Xeon 2nd generation processors up to 22 cores per processor.
- Up to 1TB ECC DDR4 main memory maximum
- Choice of most powerful graphics (nVidia graphics, supporting a choice of one to three 21.5" (1920 x 1080) Full HD displays, with optional 10 touch and remote projector repeater ports on specific models.
- Up to six high performance PCI-E card slots (10.5" length cards) provides plenty of expansion for 10GbE, Firewire, eSATA, video capture etc.
- Removable 4 x 3.5" or 8 x 2.5" SATA SSD or 5 x 2.5 SAS SSD data disk magazine with up to 153TB SATA/SAS of RAID storage and separate removable system disk magazine supporting dual mirrored SSD drives or rotating HDD. Optional FIPS drives available.
- Optional integrated power backup UPS with support for operating from 28VDC
- Aggressive dust filtration using K&N Technology and guaranteed operation from 0°C to 50°C
- MIL STD 810G Transit case
- Single removable rear panel with captive fasteners for quick service access



**MaxVision**<sup>®</sup>  
RUGGED PORTABLE COMPUTERS LLC

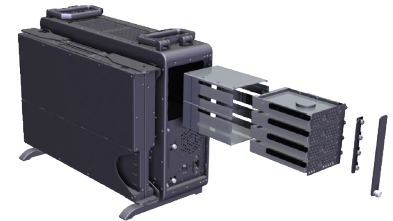
**MaxPac**<sup>®</sup>  
**8220SL/8120SL**

MaxPac Class	MaxPac 8220SL				MaxPac 8120SL			
Model	8220SL1	8220SL2	8220SL2V	8220SL3	8120SL1	8120SL2	8120SL2V	8120SL3
Description	Compact Dual Xeon/Single 21.5 FHD+	Compact Dual Xeon/Dual 21.5 FHD+	Compact Dual Xeon/Dual 21.5 FHD+	Compact Dual Xeon/Triple 21.5 FHD+	Compact Single Xeon/Single 21.5 FHD+	Compact Single Xeon/Single 21.5 FHD+	Compact Single Xeon/Single 21.5 FHD+	Compact Single Xeon/Triple 21.5 FHD+
Display Configuration	Single 21.5"	Dual 21.5"	Dual 21.5"	Triple 21.5"	Single 21.5"	Dual 21.5"	Dual 21.5"	Triple 21.5"
Display Resolution	1920 x 1200							
Display Brightness	250mcd/m <sup>2</sup>							
Touch Option	Please call							
HDMI Projector Port Option	Yes							
Graphics Card	nVidia Quadro P2200, P4000, P5000, P6000, RTX4000, RTX5000, RTX 6000							
Motherboard	SuperMicro X11DPL-i				SuperMicro X11SRA			
Processors	Dual Scalable Xeon Family up to 140watts per processor				Any Scalable Xeon W Series Processor up to 205 watts			
Memory Configuration	Total Slots : 8 (4-channel per CPU, 8 DIMM per CPU) Capacity : Maximum up to 1TB LRDIMM. Memory Type: DDR4 2666MHz; ECC				Total Slots : 8 (4-channel per CPU, 8 DIMM per CPU) Capacity : Maximum up to 512GB LRDIMM. Memory Type: DDR4 2666MHz; ECC			
Memory DIMM sizes	Memory Size :32GB, 16GB, 8GB,4GB RDIMM; 128GB, 64GB, 32GB, LRDIMM				Memory Size :32GB, 16GB, 8GB,4GB RDIMM; 64GB, 32GB, LRDIMM			
Ethernet	Dual GbE with Marvell 88E1512 PHY				Dual LAN, one with Intel® PHY I219LM LAN controller one LAN with Aquantia 5G LAN chip AQC10.			
USB 3.0	2 USB 3.0 (+ 1 Type A)				4 USB 3.0 (2 more internal header); Plus USB 3.1 ports			
USB 2.0	2 USB 2.0 (+2 headers)				2 USB 2.0 (+2 headers)			
System Disk Configuration	2.5" removable magazine supporting either single or dual SSD (mirror)							
Standard System SSD	Samsung Enterprise 480GB, 960GB, 1.92GB, 3.84GB, 7.68GB SATA SSD							
Data Disk Configuration	Choice of removable 4 x 3.5" SATA/SAS Enterprise HDD (4-Drive Magazines) or 8 x 2.5" SSD 7mm(8-Drive Magazines) or 5 x 2.5" SAS SSD 15mm (5-Drive Magazines)							
Standard System 4x HDD or 8x SATA SSD or 5x H/W Data RAID Card	Up to four 8TB, 10TB, 12TB, 14TB, 16TB 7200rpm Enterprise Class HDD or up to eight Samsung Enterprise 480GB, 960GB, 1.92GB, 3.84GB, 7.68TB SATA SSD or five SAS SSD up to 30.72TB each							
Option Slots	2 PCI-E 3.0 x16, 3 PCI-E 3.0 x8, 1 PCI-E 3.0 x4 (in x8 slot)				3 PCI-E 3.0 x16, 1 PCI-E 3.0 x4			
Audio	USB Audio with integrated stereo speakers and 1/8" external jack							
Optional UPS	600 Watt, with integrated 28VDC LiFePO4 85 W-Hr battery. Supports 90-264VAC 50/60Hz, 115VAC@400Hz, or 28VDC							
Keyboard/Mouse	Water proof 104 key keyboard (USB); water proof wheel mouse (USB). Optional 104 keyboard with CAC/Smart Card Reader							
Software: OS	Windows 10 Pro, Windows 2016 Server, Redhat Enterprise Linux Standard, Redhat Enterprise Linux Server, CENT OS							
TPM 2.0 included	Yes							
Secure Boot Support	Yes							
Dimension Setup	20.8"W x 16.1"H x 8.5"D	40.4"W x 16.1"H x 8.5"D	59.3"W x 16.1"H x 9.7"D	21.2"W x 26.6"H x 8.5"D	20.8"W x 16.1"H x 8.5"D	40.4"W x 16.1"H x 8.5"D	59.3"W x 16.1"H x 9.7"D	21.2"W x 26.6"H x 8.5"D
Weight	44lbs	49.7lbs	56lbs	51.5lbs	44lbs	49.7lbs	56lbs	51.5lbs
Transit Case/Size	Pelican 1630 with custom foam inserts and Poron vibration isolation system. Outside Dim. 31.28" x 24.21" x 17.48"							
Loaded Weight	85lbs	93lbs	102lbs	98lbs	84lbs	92lbs	101lbs	97lbs
Transit Case Environmental	Mil Std 810G, 506.5 P I(Rain), 509.5(Salt/Fog), 510.5(Sand/Dust),514.6C-II(Vibration),516.6-VI(drop), -33C to 70C non operational; drop test from 30"							
Operational Environmental	Mil std 810G, 501.5 A2 (Basic HOT) 0-50C	Mil std 810G, 501.5 A2 (Basic HOT) 0-50C	Mil std 810G, 501.5 A2 (Basic HOT) 0-50C	Mil std 810G, 501.5 A2 (Basic HOT) 0-50C	Mil std 810G, 501.5 A2 (Basic HOT) 0-50C	Mil std 810G, 501.5 A2 (Basic HOT) 0-50C	Mil std 810G, 501.5 A2 (Basic HOT) 0-50C	Mil std 810G, 501.5 A2 (Basic HOT) 0-50C
Regulatory	FCC Class A							

Pelican 1630 transit case meets MIL STD 810G environmental requirements



Exploded view of 4x 3.5" removable magazine. Supports SATA and SAS drives as options. Shown with displays closed.



While Rugged Portable Computers LLC uses reasonable effort to ensure that this information is accurate and up-to-date, the information may contain factual or typographical errors. Rugged Portable Computers LLC makes no warranties or representation as to the accuracy of such information. The information and products may be changed at any time without prior notification or obligation. Rugged Portable Computers LLC © Copyright 2020.

Rugged Portable Computers LLC | 509 Production Ave. | Madison, AL 35758, USA  
Phone: 256.772.3058 | Toll Free: 800.533.5805 | Fax: 256.772.3078  
E-Mail: sales@maxvision.com | Web: www.maxvision.com